



**HYDROSIL**  
INTERNATIONAL LTD.

# Air Filters Product Guide

WHERE MEDIA IS KEY

# Refillable Filters

---



## Refillable Trays

Dimensions:	Custom Sizes- Contact Hydrosil for a Drawing
Construction:	Powder Coated Cold Rolled Steel
Volume of Media:	Dependent on Size Tray
dP @ 500 cfm:	Contact Hydrosil for Pressure Curve



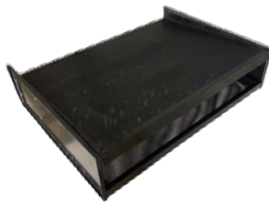
## HS-400-M

Dimensions:	24"x24"x12" (Full Size), 12"x24"x12" (Half Size), or 20"x24"x12"
Refillable Trays:	Full Size Has Eight 11"x22"x1" Trays
Construction:	Galvanized Aluminum Steel
Volume of Media:	1.0 ft <sup>3</sup> per Full Size Housing
dP @ 500 cfm:	0.77" WG (Refillable Trays) 0.485" WG (Disposable Trays)



## HS-12-M

Dimensions:	24" x 12" x 12"
Construction:	Powder Coated Cold Rolled Steel
Volume of Media:	1.0 ft <sup>3</sup> per Module
dP @ 500 cfm:	0.89" WG



## HS-18-M

Dimensions:	24" x 18" x 6"
Construction:	Powder Coated Cold Rolled Steel
Volume of Media:	0.5 ft <sup>3</sup> per Module
dP @ 500 cfm:	0.55" WG



## Canister

Dimensions:	Length: 18" & 24" Diameter: 5.7"
Construction:	Galvanized
Volume of Media:	0.15 ft <sup>3</sup> (18" Canister) 0.20 ft <sup>3</sup> (24" Canister)
dP @ 500 cfm:	Contact Hydrosil for Pressure Curve



## Vaporsorb

Dimensions:	24" x 24" x 4", 12" x 24" x 4"
Construction:	Galvanized and Stainless Steel
Volume of Media:	0.33 ft <sup>3</sup>
dP @ 500 cfm:	0.15 " WG

Dimensions: Each Piece is 12"x10"x4"  
Construction: Plastic  
Volume in Set: 0.6 ft<sup>3</sup>  
dP @ 500 ft/min: 0.55" WG

(847) 844-0680

125 Prairie Lake Rd, East Dundee, IL 60118

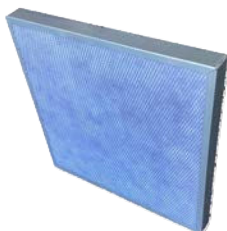
# Disposable Filters

---



## Disposable Honeycombs

Dimensions:	Custom Sizes- Contact Hydrosil for a Drawing
Construction:	Electro tin plated corrugated cardboard honeycomb
Volume of Media:	Dependent on Size Tray
dP @ 500 cfm:	Contact Hydrosil for Pressure Curve



## Poly-pad, Expanded Metal Honeycomb

Dimensions:	Custom Sizes- Contact Hydrosil for a Drawing
Construction:	Electro tin plated, corrugated cardboard honeycomb with polypad and expanded metal
Volume of Media:	Dependent on Size Tray
dP @ 500 cfm:	Contact Hydrosil for Pressure Curve



## HS-400-P

Dimensions:	24"x24"x12" (Full Size), 12"x24"x12" (Half Size), or 20"x24"x12"
Construction:	Plastic Frame, Inner Trays are Corrugated Carboard Honeycombs
Volume of Media:	0.75 ft3 per Full Size Housing
dP @ 500 cfm:	0.485" WG



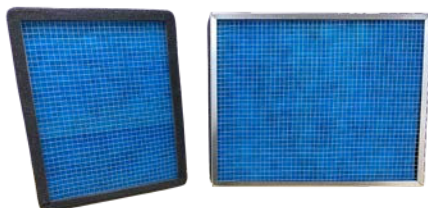
## HS-12-P

Dimensions:	24" x 12" x 12" (per set), 12" x 12" x 12" (per module)
Construction:	Incinerable Plastic Modules
Volume of Media:	1.0 ft3 per Set
dP @ 500 cfm:	0.72" WG



## HS-18-P

Dimensions:	24" x 18" x 6" (per set), 12" x 18" x 6" (per module)
Construction:	Incinerable Plastic Modules
Volume of Media:	0.45 ft3 per Set
dP @ 500 cfm:	0.43" WG



## HS-Captured-Air

Dimensions:	20" x 25" x 4" or 16" x 20" x 4"
Construction:	Electro tin plated, corrugated cardboard honeycomb with polypad and wire mesh
Volume of Media:	Dependent on Size
dP @ 500 cfm:	0.45" WG





**CUSTOMIZATION**



**HIGH REMOVAL CAPACITY**

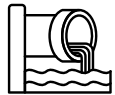


**PRODUCT OF USA**

## Applications



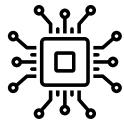
***Petrochemical Facilities***



***Wastewater Treatment***



***Cannabis Growhouses***



***Semiconductor Plants***



***Hospitals***



***Commercial & Industrial***



**HYDROSIL**  
INTERNATIONAL LTD.